

CW288SGU (單體馬桶)





單體式馬桶

型號: CW288SGU

洗淨方式: 龍捲噴射式

洗淨沖水量: 4.8L

尺寸: W452*D723*H625mm

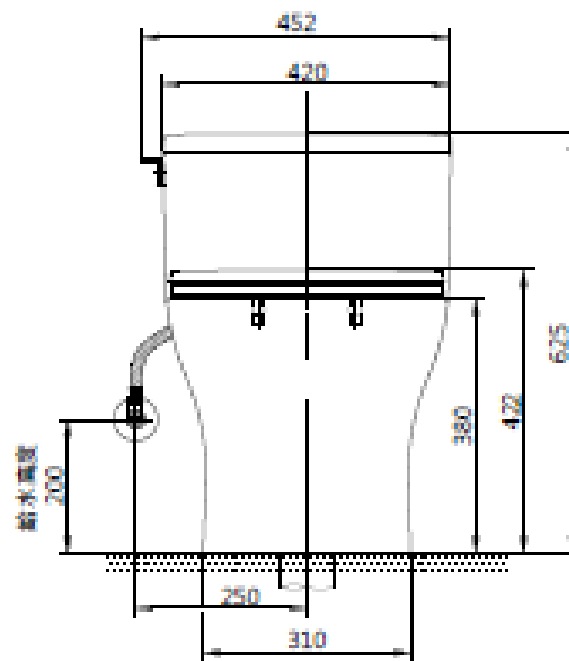
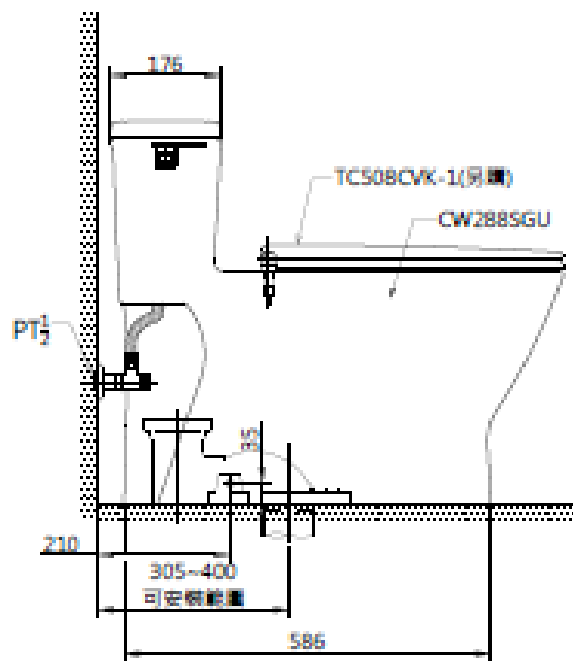
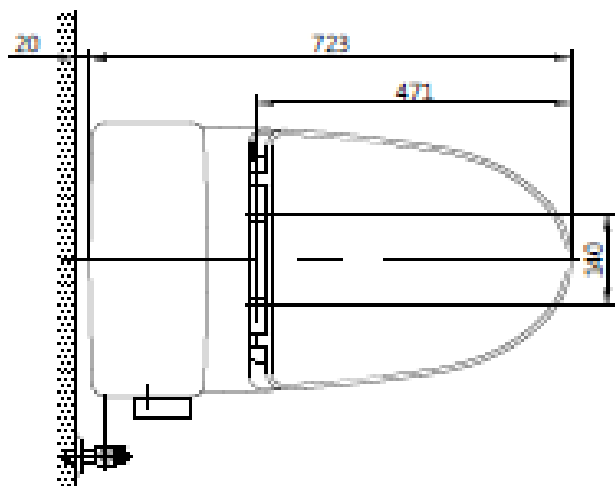
排水距離: 305~400mm

緩降便座: TC508CVK-1

施工方式: 套管式施工

尺寸圖

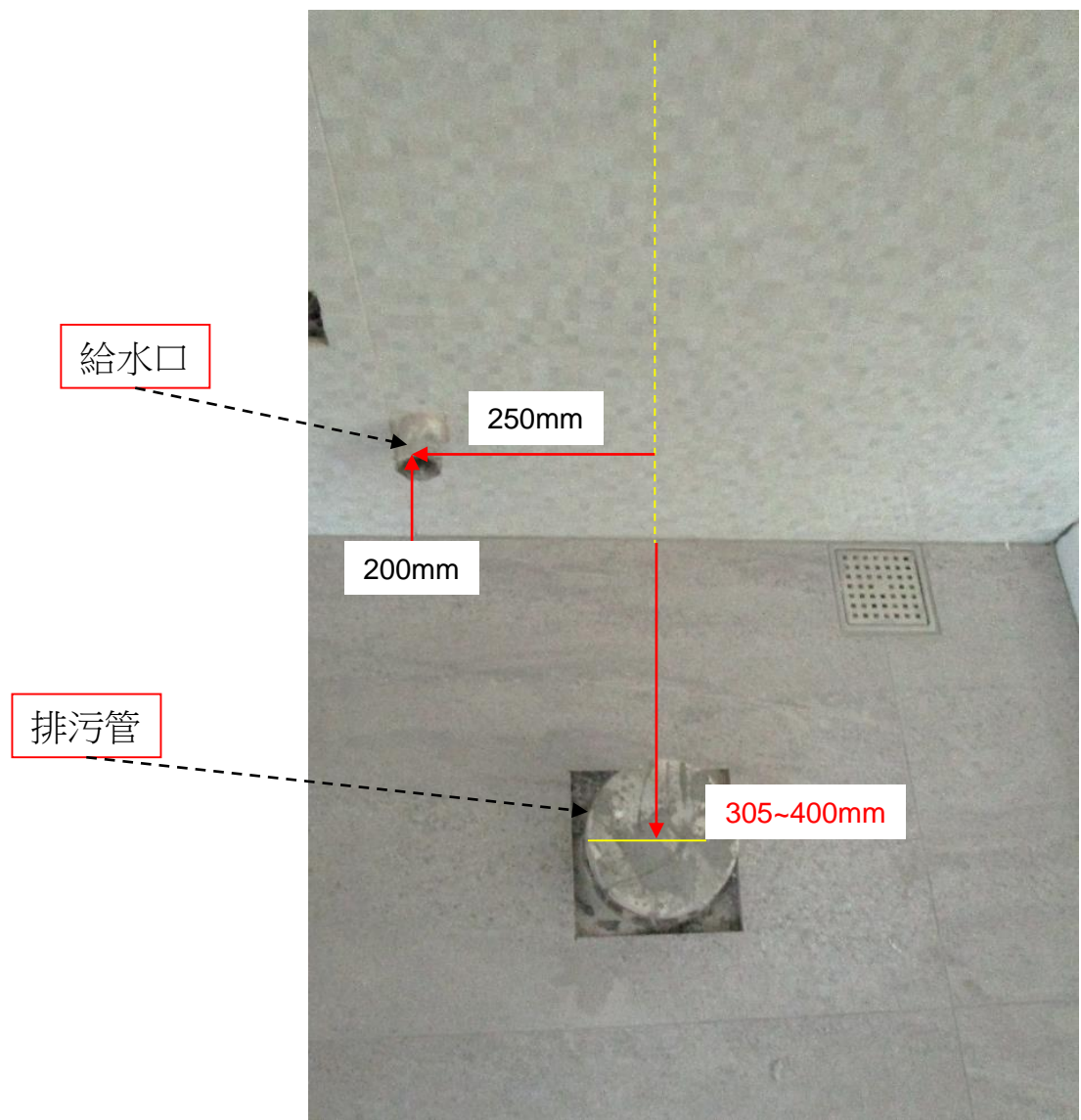
TOTO



（安裝前）

1. 現場給水管及排污管位置尺寸確認
2. 現場安裝相關位置確認
3. 現場施工零件型號是否正確
4. 檢查零件是否缺少或破損
5. 確實依照說明書施工

現場給水管及排污管位置尺寸確認



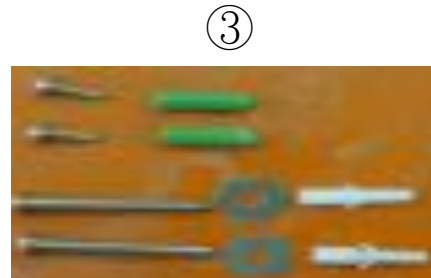
1.PAL075高壓軟管



2.880三角凡而



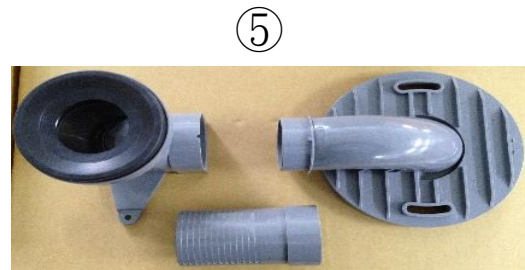
3.TWP-13螺絲包



4.TWP-288固定金具

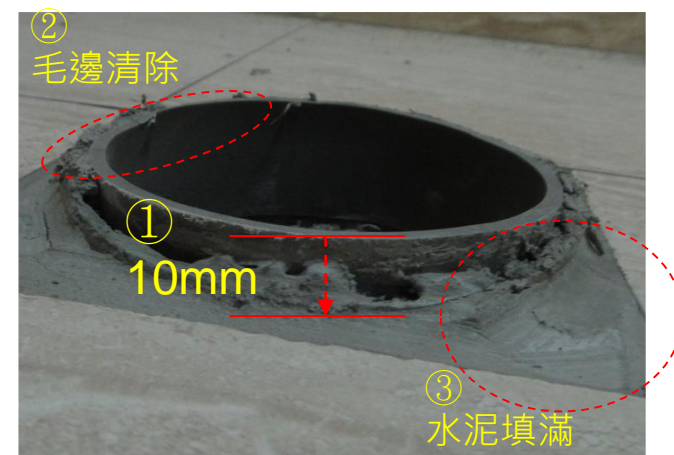


5.HP288-BT400排污套管



6.T436WG100油泥





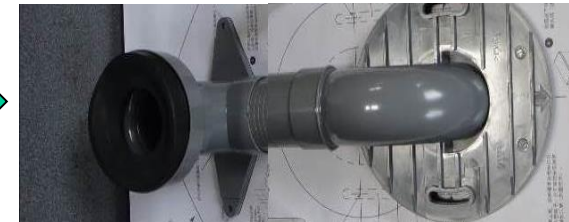
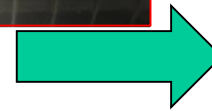
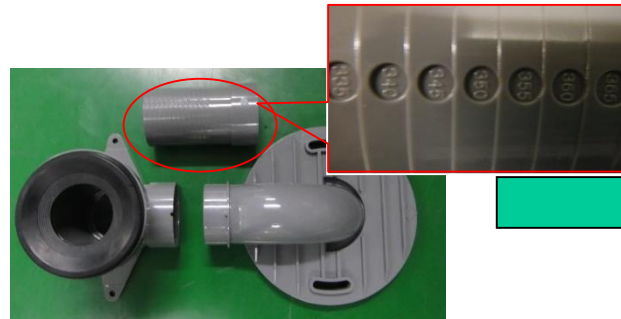
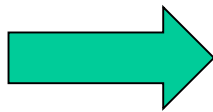
1. 排汙管需凸出地板完成面10mm.
2. 排汙管口毛邊須清除.
3. 磁磚缺口內需填滿水泥.



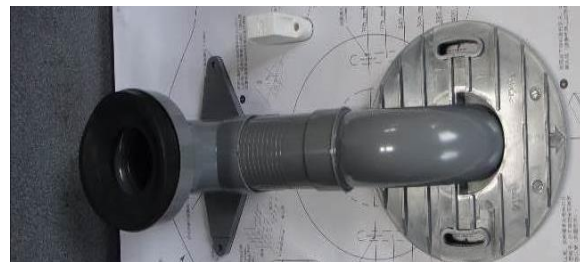
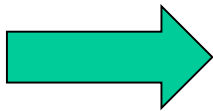
直管保留不用



1. 排污中心管距**305mm**，排污套管直接組裝不加沖水直管。



2. 排污中心管距**305~400mm**內，對照直管刻度裁切組裝套管即可。



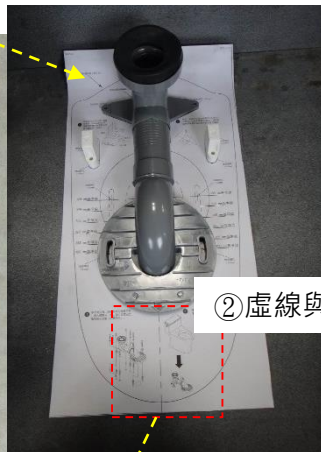
3. 排污中心管距**400mm**，排污套管加沖水直管直接組裝黏合。

套管組裝

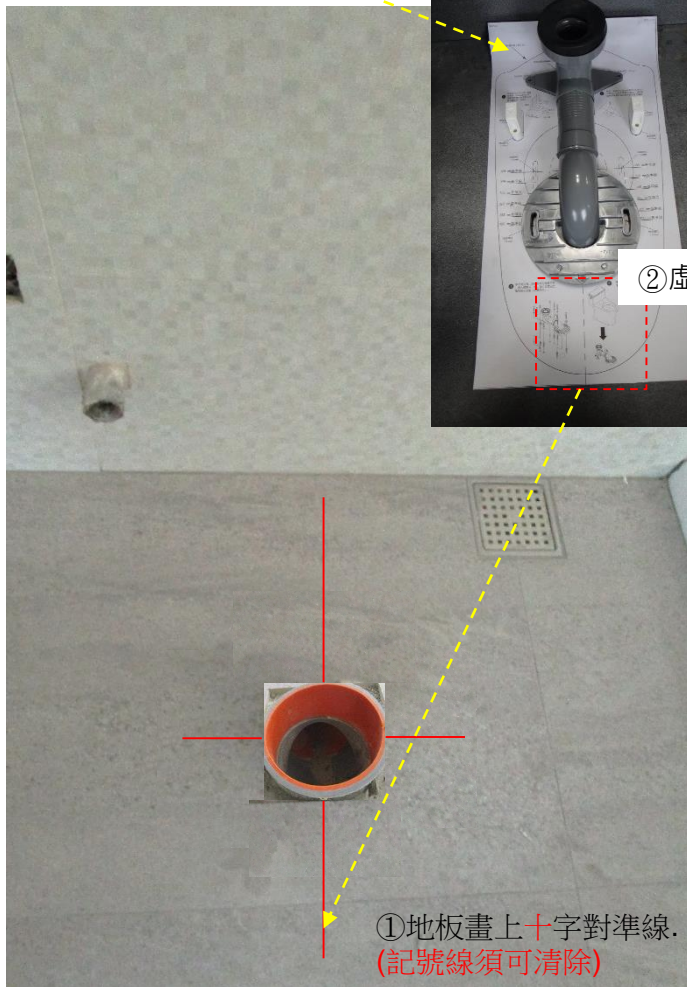


塑膠油要確實塗抹，
接合避免漏水漏氣。

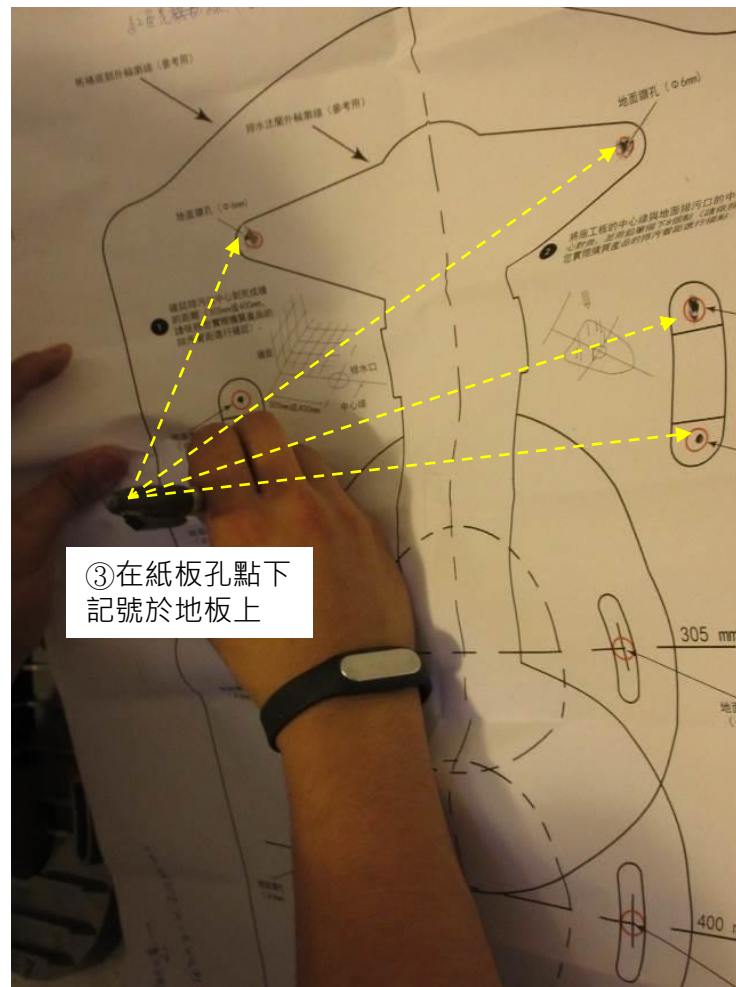
①紙板靠牆



②虛線與對準線



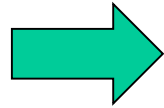
①地板畫上十字對準線。
(記號線須可清除)



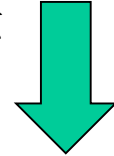
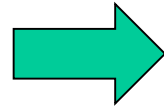
③在紙板孔點下
記號於地板上



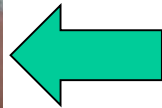
1. 確認點孔



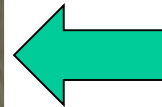
2. 鑽尾大小. 束膠子長度注意



5. 排污套管上放油泥



4. 粉塵清除



3. 打入束膠子



1. 套管組邊緣及固定塊打上矽力康。



2. 馬桶座放入排污
套管組。



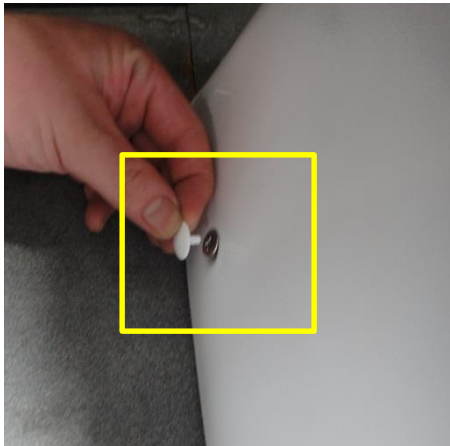
(固定螺絲鎖緊)



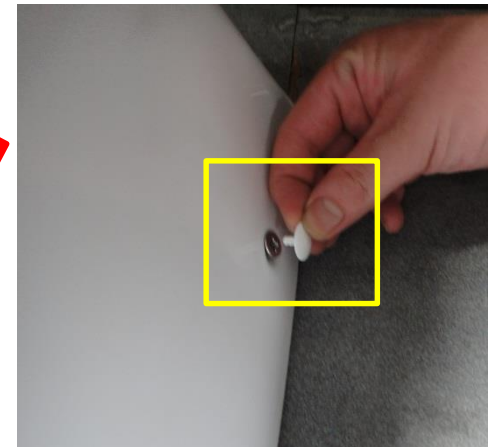
馬桶座水平



(固定螺絲鎖緊)



(左修飾蓋)



(右修飾蓋)



馬桶底座邊緣打上矽利康