

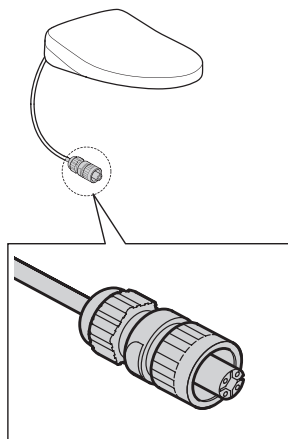
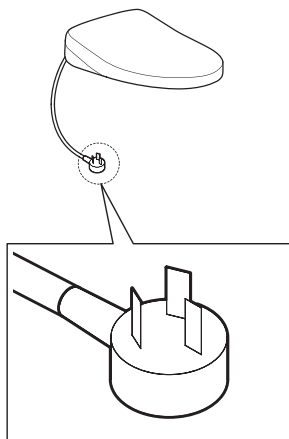
WH173BT (系列)
WH172AST (系列)
WH173BT series
WH172AST series

致施工人員的重要通知
Important Notice for Installers

因安裝的衛洗麗不同，牆壁開孔位置有所差異。

詳細說明請參考說明書中第12頁內容。

The positions of the holes to drill in the wall vary depending on WASHLET being installed.
Please check page 12 for details.



注意事項 Cautions



注意：若忽視此標誌可能導致對說明書的誤解，從而造成人身傷害或財產損失。



Caution: Neglecting this sign may result in misunderstanding of the installation instructions, which can lead to injuries or damage to property.



重點事項：

1. 隱蔽式水箱功能：儲水、進水器、排水閥、壁掛式馬桶支架，使用功能記載於隱蔽式水箱面板說明書中。
2. 此說明書只提供隱蔽式水箱安裝相關內容。
3. 在澳洲地區安裝時請遵守AS/NZS 3500系列標準或者當地標準。



Important:

1. Functions of the manual concealed cistern: storage water, inlet and outlet valve vessel, frame of wall-hung toilet, The function reflected in the manual actuator panel instructions.
2. This instruction manual only supports the installation of the manual concealed cistern.
3. For Australia, the installation has to be in accordance with AS/NZS 3500 series of Standards and/or local standards.

清潔、廢物處理 Cleaning and waste disposal

1. 請使用清水或稀釋過的中性清潔劑(如洗碗精等)擦拭和清潔水箱面板，杜絕使用腐蝕性強的清潔劑(如去汙粉、塗料稀釋劑、苯等)或鐵絲球進行擦拭，以免腐蝕並破壞面板的美觀。

Use water or dilute mild detergent (such as dishwashing detergent) to scrub and clean the surface, Never use strong corrosive detergent (such as cleanser, paint thinner, benzene and so on) or wire ball to scrub, and to avoid corroding the surface of the product.

2. 如果您需要廢棄本產品，請勿將其作為一般生活垃圾處理，請依照法規經由合格業者進行合適的處理、恢復和回收。

Please dispose of this product in accordance to the local waste disposal laws and regulations.

目錄 Table of contents

注意事項 Cautions P.2
簡易故障判斷及處理方式 Self diagnosis and troubleshooting P.3
安裝說明 Installation instructions P.4
維修保養 Servicing procedures P.16

簡易故障判斷及處理方法 Self diagnosis and troubleshooting

⚠ 溫馨提示：

以下表格的問題點的處理方法內有註明(針對用戶)的,用戶可以參照後自行解決。如果解決不了,嚴禁未經指定的非專業人士進行自行拆解和維修,需及時聯繫相應的專業人士解決,避免問題擴大化或產生不必要的麻煩和損失。

⚠ Note:

Users may fix the problems on their own if the corrective action is to be taken by the user according to the chart below. Non-professionals are prohibited from disassembling and repairing the product. Please contact the relevant professionals for further troubleshooting to avoid aggravating the problem.

常見故障	原因	處理方法
水箱無法進水	1. 進水總閥未打開或停水。	1. 打開進水總閥或聯繫業者解決 (針對用戶)
	2. 水箱三角凡而未打開。	2. 打開水箱三角凡而 (針對專業的維修人員)
	3. 進水器有異物導致浮筒無法正常作動。	3. 檢查進水器並排除異物 (針對專業的維修人員)
	4. 排除以上原因, 依然無法進水。	4. 更換進水器 (針對專業的維修人員)
水箱有水不斷 流到馬桶裡	1. 水箱出水口、排水閥底座周圍有異物(砌牆時不小心掉入的砂漿、小石塊等), 造成排水閥無法完全的密閉。	1. 清理水箱內部的異物 (針對專業的維修人員)
	2. 面板調節螺桿外露部份偏長, 面板裝上後造成排水閥橡膠圈固定在某一位置上, 無法密閉。	2. 調整面板調節螺桿的位置 (針對專業的維修人員)
	3. 在水箱裡面的面板調節螺桿偏長, 頂到水箱內部的編織軟管或其水箱箱體上, 有時導致無法復位。	3. 剪短面板調節螺桿 (針對專業的維修人員)

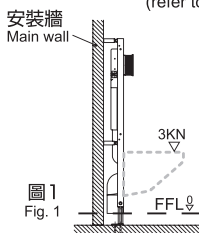
Common faults	Possible causes	Corrective actions
Water does not flow into the tank	1. Household water supply has not been turned on or has been cut off.	1. Turn on the household water supply or contact the relevant personnel (To be done by the user).
	2. Angle valve has not been turned on.	2. Turn on the angle valve (To be done by professionals only).
	3. Residuums in the inlet valve causing the float device to not operate properly.	3. Check the fill valve and remove the residuum (To be done by professionals only).
	4. None of the above.	4. Change the inlet valve (To be done by professionals only).
Water is constantly running into the bowl.	1. Flush valve seal is not completely closed due to residuums around the outlet of the cistern and flush valve (sand or debris lodged in during installation).	1. Remove the residuums in the cistern (To be done by professionals only).
	2. The exposed part of the panel's adjust screw is too long, which resulting the rubber of flush valve can not fixed in a certain position and can not sealed.	2. Adjust the position of the panel's screw (To be done by professionals only).
	3. The part of panel's adjusting screw in the cistern is too long, which may get stuck in the soft pipe or cistern body and unable to return sometimes.	3. To cut back the adjust screw (To be done by professionals only).

安裝說明

INSTALLATION INSTRUCTION FOR MANUAL CONCEALED CISTERN

⚠ 注意事項：

1. 安裝前請仔細閱讀說明書，本公司不承擔因安裝人員未依照說明書要求施工所造成的損失，產品中包含潤滑劑，可以在安裝馬桶時使用。
2. 在支架安裝前，應先確認安裝位置，並根據室內裝修的總體策劃確定裝修完成後的地坪面FFL，在安裝牆上劃出FFL線，並以此作為高度0的基準線。(見圖1)



- ⚠ 3. 在支架安裝前，請確認所安裝牆壁為承重牆，牆壁厚度在80mm以上，且當300kgf以上的力施加於完工後的馬桶前端時，牆壁需能承受這股拉力。

注意：1. 請於貼瓷磚前安裝本產品；所有的尺寸單位為毫米(mm)。
2. 圖示零件若與實物不符，請以實物為準。

⚠ Important:

1. Please read through this Instructions carefully prior to installation, and our company shall not be responsible for any loss caused by not installing according with this Instructions. Lubricants are provided for the installation.
2. Please confirm the FFL according to the overall indoor fitment method. Line out the FFL on the wall and always regard FFL as datum line of 0 height. (refer to Figure 1)

- ⚠ 3. Please confirm the wall is the main wall, the thickness exceed 80mm and it can bear more than 300kgf strength when the strength act on the front of toilet bowl.

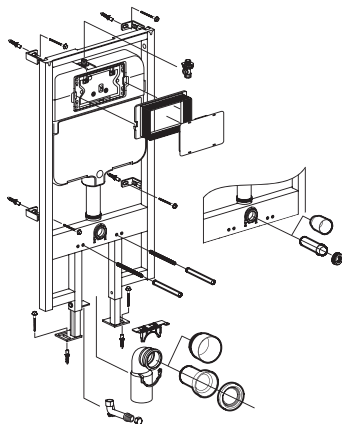
Note: 1. Please install the frame before paving the tiles. The dimensional unit is millimeter.
2. As the parts images are for illustrative purposes only, please refer to the actual product if it varies from the parts images.

⚠ FFL 0 = 完成地板(地坪面).

⚠ FFL 0 = FFL of finish face, all dimension is millimeter

配件一覽表


Accessories List:



包裝確認 Included Parts

請仔細確認包裝中的配件是否齊全：

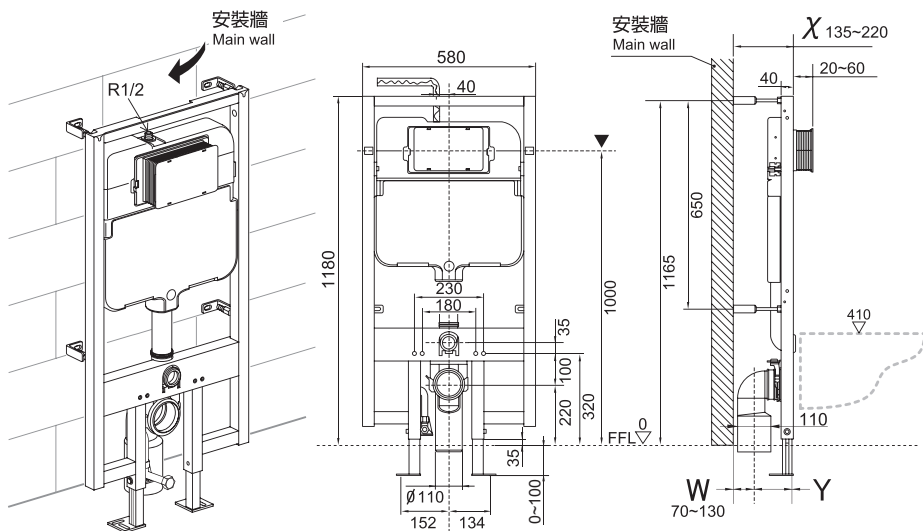
Check to make sure you have all these parts from the package:

<p>牆內水箱(支架) In Wall Tank (Carrier)</p> 	<p>包裝1中的配件 Parts in Bag 1</p> <div><p>排水彎管 擋泥堵頭 Outlet Pipe Mud Guard</p></div> <div><p>沖水彎管 擋泥堵頭 Inlet Pipe Mud Guard</p></div>	 <p>安裝說明書 Installation Manual</p>
	 <p>保護框 Push Plate Rough In</p>	 <p>施工板 Installation Template</p>
<p>包裝2中的配件 Parts in Bag 2</p> <div><p>排水彎管 Outlet Pipe</p></div> <div><p>上管夾 Upper Bracket</p></div> <div><p>螺絲(6) Lag Screw (6)</p></div> <div><p>全螺牙螺桿(2) Threaded Mounting Stud (2)</p></div> <div><p>下管夾 Lower Bracket</p></div> <div><p>塑膠子(6) Anchor (6)</p></div>	<p>包裝3中的配件 Parts in Bag 3</p> <div><p>排水直管 Flange Pipe</p></div> <div><p>密封套 Seal Gasket</p></div> <div><p>沖水直管 Inlet Pipe</p></div> <div><p>螺母(2) Nut (2)</p></div> <div><p>墊片(2) Washer (2)</p></div> <div><p>固定橡膠墊(*2) Stud Bolt Flange (2)</p></div> <div><p>裝飾蓋(2) Cap (2)</p></div> <div><p>潤滑海綿 Lubricated Sponge</p></div>	
<div><p>螺栓(4) Bolt (4)</p></div> <div><p>螺栓(4) Bolt (4)</p></div>	<p>包裝4中的配件 Parts in Bag 4</p> <div><p>螺母(4) Nut (4)</p></div> <div><p>牆腳固定塊 Angle Fixture</p></div> <div><p>三角凡而 Angle Valve</p></div>	
<div><p>分歧管 Branch Pipe</p></div>	<p>包裝5中的配件 Parts in Bag 5</p> <div><p>管帽 Plug</p></div> <div><p>螺栓(3) Bolt (3)</p></div>	

安裝前的注意事項 Before Installation

基本尺寸及供水管道鋪設：

Dimensions and Supply Pipe-laying



χ	W	Y	旋轉45度 * 45° swinging*
200~220	70~90	130	○
180~220	70~110	110	○
155~215	70~130	85	·
135~195	70~130	65	·

* 參考第8頁"安裝方法"。

* Refer to page 8 for Installation Procedure

要求排水彎管中心到安裝牆面的距離 (W) 在 70~130 之間。

Please make sure W is between 70 to 130.

安裝方法 Installation procedure

符號和意思：

Symbols and their meanings



：需要目視確認。
Visual confirmation required.



水平確認
Horizontal
：需要水平確認。
Horizontal confirmation required.



垂直確認
Vertical
：需要垂直確認。
Vertical confirmation required.

做標記
Mark



：標示位置。
Mark the location.

止瀉帶
Sealing Tape



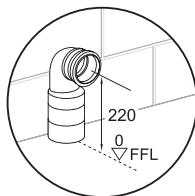
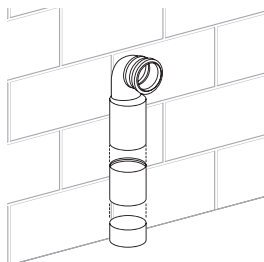
：請使用止瀉帶密封固定。
Wrap the sealing tape.

安裝方法 Installation procedure

1

安裝排水彎管:

Install the discharge pipe



2

安裝牆腳固定塊、調整地板固定支架:

Install Angle Fixture and adjust floor-fixing bracket



水平確認
Horizontal

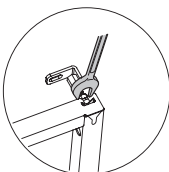
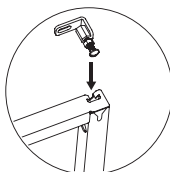


垂直確認
Vertical

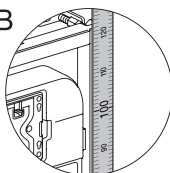


A 安裝牆腳固定塊。

Install Angle Fixture.

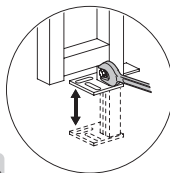


B



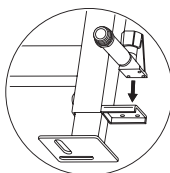
C 調整地板固定支架。

Adjust floor-fixing bracket.



D 安裝分歧管。

Install the branch pipe.



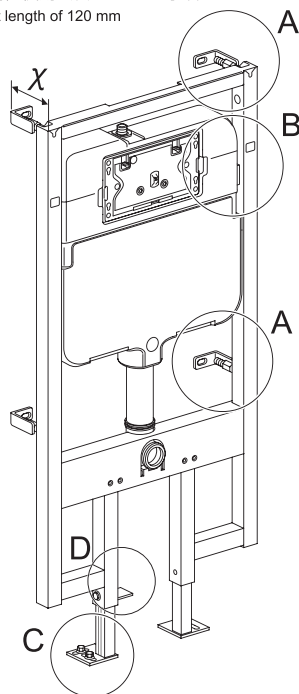
$X < 170$ 時, 使用長度75mm的螺栓

$X < 170$: Bolt length of 75 mm

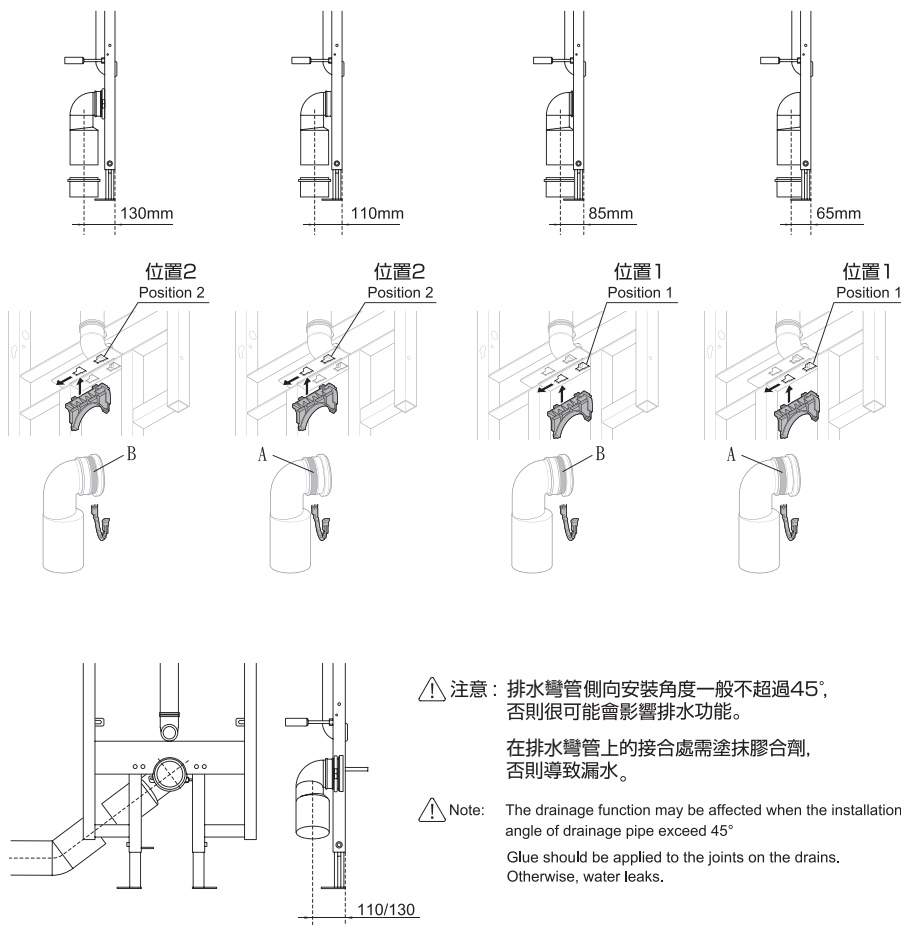


$X \geq 170$ 時, 使用長度120mm的螺栓

$X \geq 170$: Bolt length of 120 mm

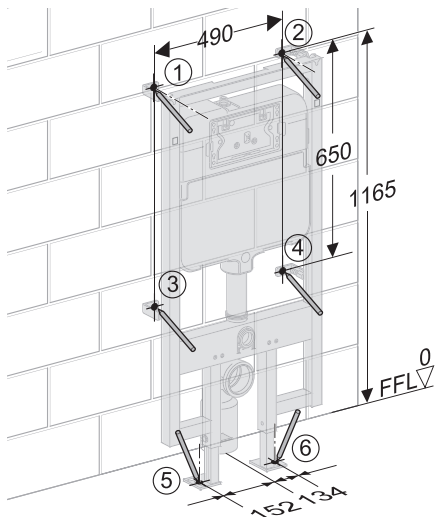


3 安裝上管夾： Install the upper bracket



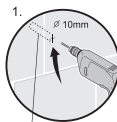
4 在安裝牆和地板上標記: (Ø10X深60)

Draw on the main wall and floor

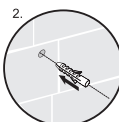


5 塑膠子的使用方法:

Install Anchors



深60mm
Depth 60 mm



步驟說明:

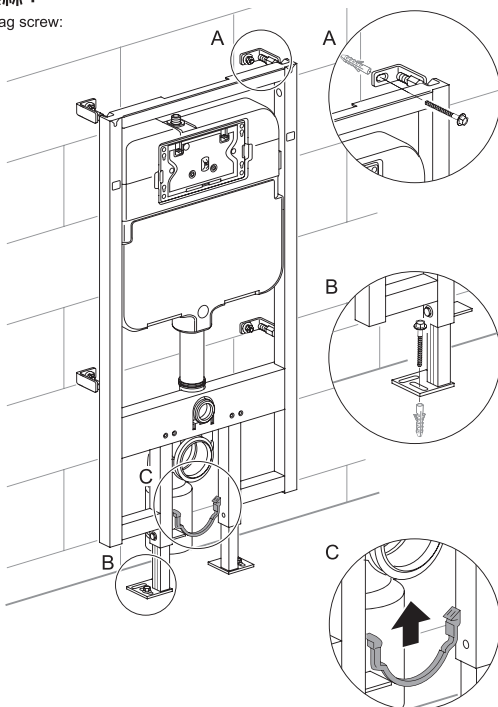
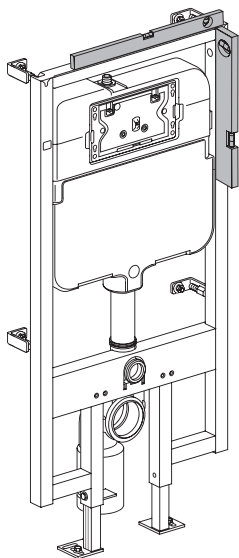
1. 鑽孔Ø10X深60
2. 裝入塑膠子

As shown on picture:

1. Drill $\phi 10 \times 60$;
2. Insert anchor;

6 調節支架的水平和垂直, 並鎖緊螺絲:

Adjust horizontally and vertically, and tighten lag screw:



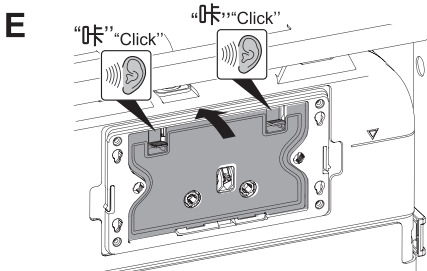
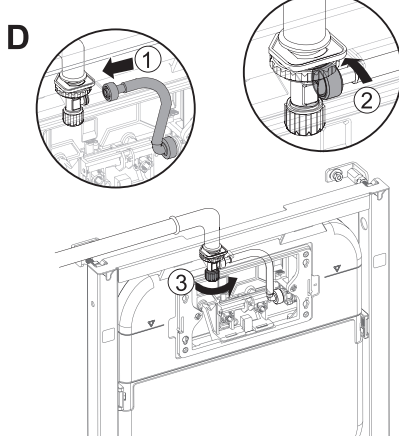
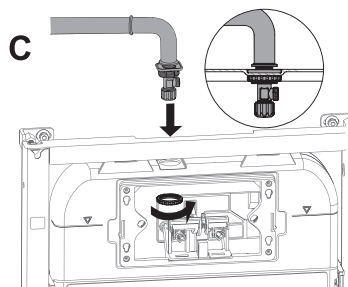
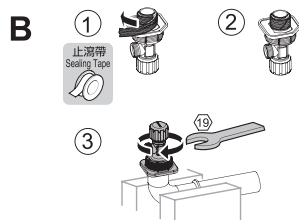
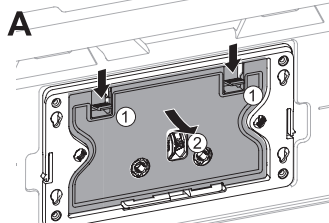
7

安裝三角凡而：

Install the Angle valve

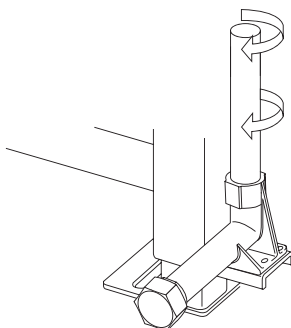
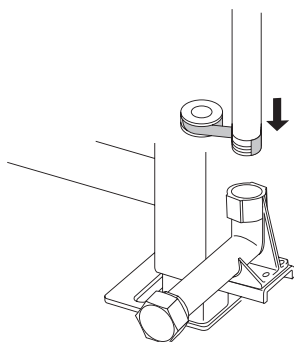
⚠ 注意：給水管需加強固定，避免共振聲。

⚠ Note: The water supply pipe should be strengthened and fixed to avoid resonance sound.



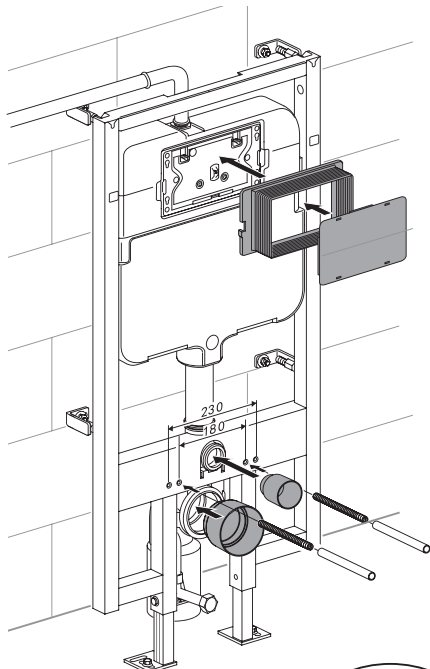
安裝供水管

Install the water supply pipe



8

裝修嵌件安裝： Install Plug

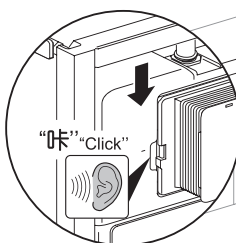


注意：

對於全螺牙螺桿的固定支撐上提供二組不同距離螺栓孔，裝配時，請根據馬桶的尺寸進行選擇安裝。



For the fixing threaded mounting stud, there are two groups of screw holes on the bracket which are of different distance. Please choose the right position according to the size of the toilet bowl.



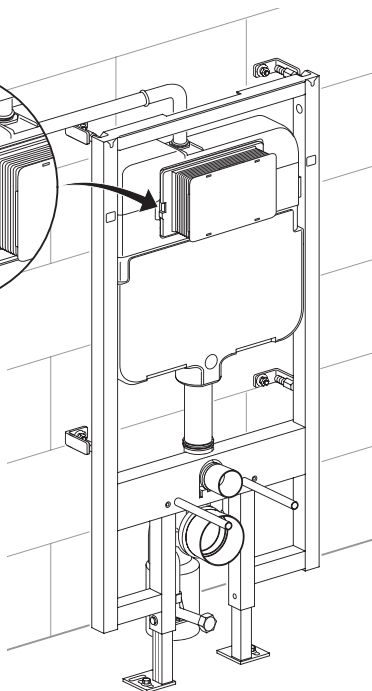
重要注意：在支架安裝後砌牆前，務必通水並放置12小時以上，檢查是否有滲漏現象。

砌牆前，以塑膠包覆方式保護分歧管



Important remind: When the concealed tank fixed completely, it is important to test leaking with water upon 12 hours before fixing wall.

Protect the split pipe with plastic wrap before building the wall.



安裝完成圖
Sketch of installed frame



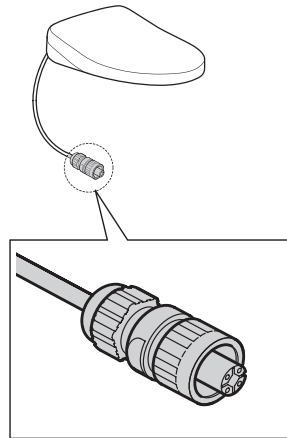
因安裝的衛洗麗不同，牆壁開孔位置有所差異。

The positions of the holes to drill in the wall vary depending on WASHLET being installed.



如果是配有插座插頭的衛洗麗，請前往第13頁。

For WASHLET with an attached outlet plug, proceed to page 13.



如果是配有上述插頭的衛洗麗，請前往第14頁。

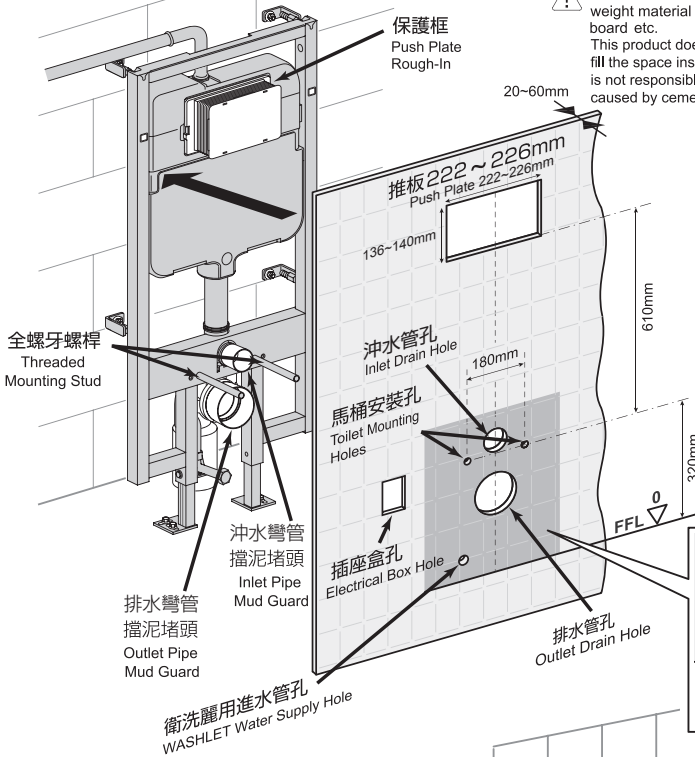
For WASHLET with the above plug attached, proceed to page 14.

9

裝修牆厚度範圍20~60mm (從固定支架外面算起，到貼磚後完成面)

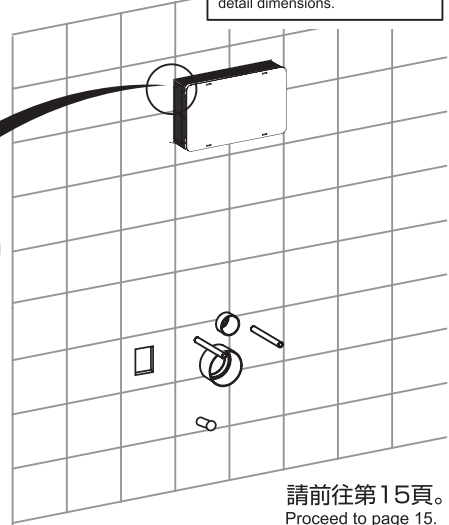
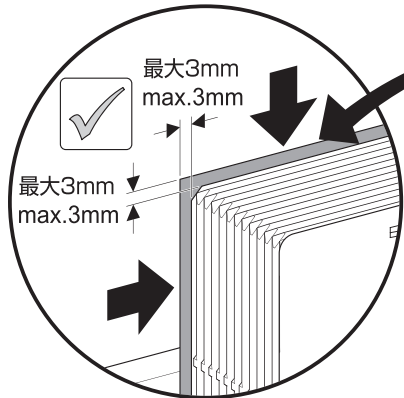
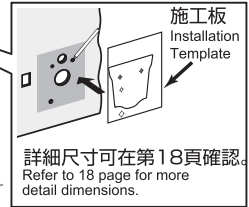
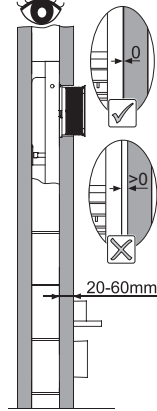


The thickness of fixed wall is 20~60mm
(measured from the front of frame to the finished tile surface)



注意：
裝修牆嚴禁使用輕質、易變形、不承重材料，如：發泡材、石膏等。
本產品禁止使用任何填充物(如:水泥等)至裝修牆內空間。
對本產品因填充物所引起變形,而無法安裝及更換零件等,本公司恕不負責。

It is forbidden to use unsustainable, ductile or light-weight material to fix the covering. Such as foam board etc.
This product does not allow the use of any cement to fill the space inside the decoration wall. The company is not responsible for any damage to the water tank caused by cement installation.



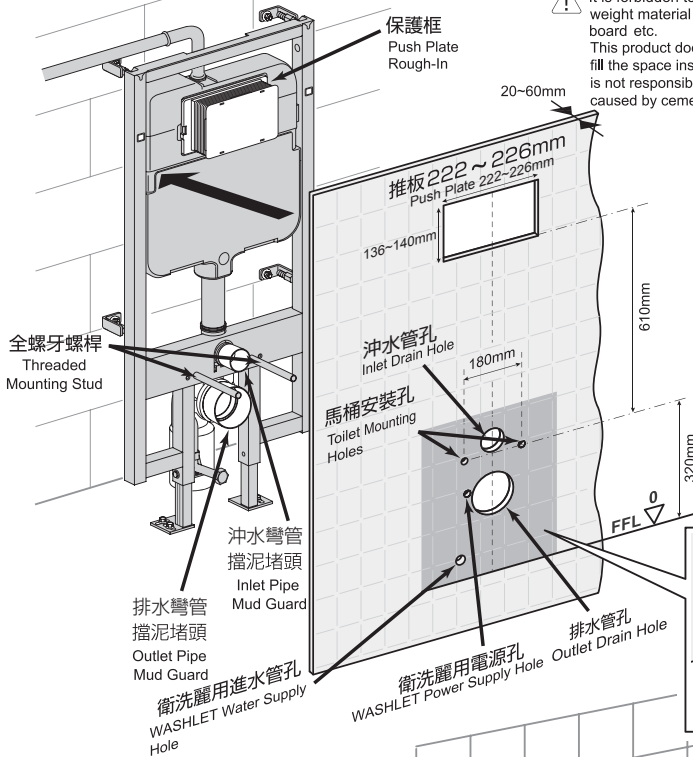
請前往第15頁。
Proceed to page 15.

9

裝修牆厚度範圍20~60mm (從固定支架外面算起，到貼磚後完成面)

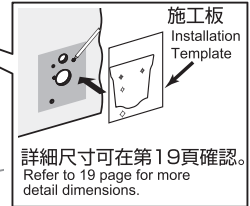
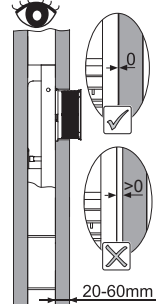


The thickness of fixed wall is 20~60mm
(measured from the front of frame to the finished tile surface)

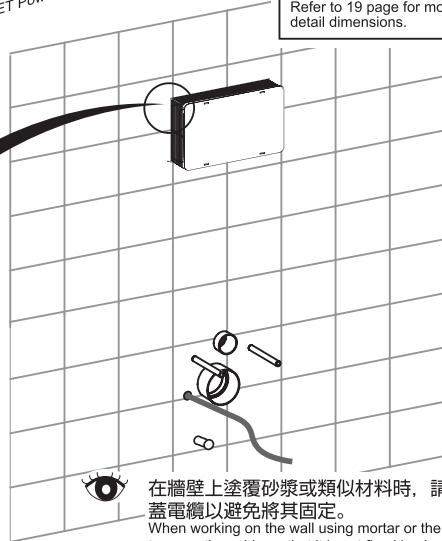
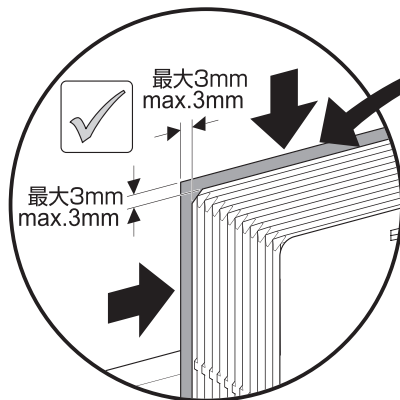


注意：
裝修牆嚴禁使用輕質、易變形、不承重材料，如：發泡材、石膏等。
本產品禁止使用任何填充物(如：水泥等)至裝修牆內空間。
對本產品因填充物所引起變形，而無法安裝及更換零件等，本公司恕不負責。

It is forbidden to use unsustainable, ductile or light-weight material to fix the covering. Such as foam board etc.
This product does not allow the use of any cement to fill the space inside the decoration wall. The company is not responsible for any damage to the water tank caused by cement installation.



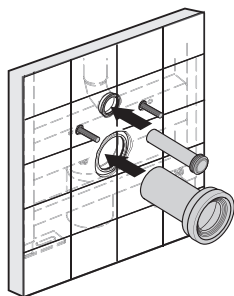
詳細尺寸可在第19頁確認。
Refer to 19 page for more detail dimensions.



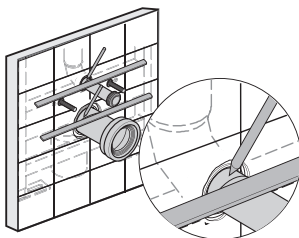
在牆壁上塗覆砂漿或類似材料時，請務必先遮蓋電纜以避免將其固定。
When working on the wall using mortar or the like, be sure to cover the cable so that it is not fixed in place.



1.



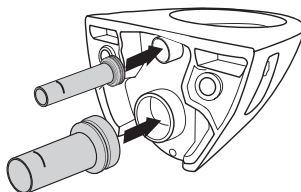
2.



將两根直管分別插入沖水彎管和排水彎管到位，並畫線標示。

Set Straight Pipes into Flush Bend and Drain Bend properly, and marks lines.

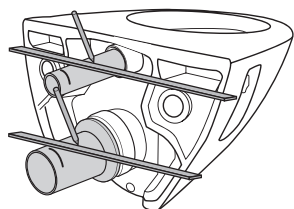
3.



分別在兩根直管橡膠圈上塗上潤滑油後，再插進馬桶中。

Add lubricant onto the Rubber Gaskets of two Straight Pipes and set them into Bowl.

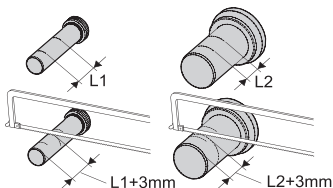
4.



如上圖進行劃線標示。

Mark lines as shows.

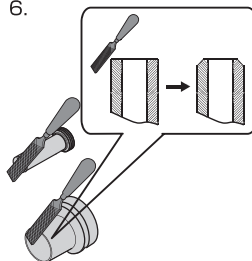
5.



沖水直管所劃線標示之間為L1；排水直管所劃線標示之間為L2。如上圖進行切割直管作業。

L1 is the distance of two marks on Inlet Pipe, and L2 is that of two marks on Flange Pipe. Cut Straight Pipe just as shows.

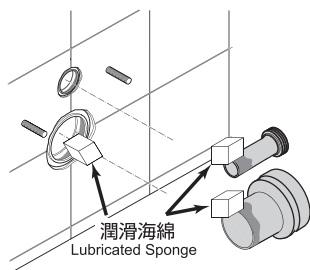
6.



將裁短的兩根直管管口端面打磨倒角(如圖)，並去除毛邊。

Chamfer and trim the cutting edges on the shortened Straight pipes (as shows).

7.



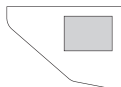
取出帶有砂油(潤滑油)的海綿在直管與彎管的結合處塗上砂油(潤滑油)

Take out the sponge with silicone oil (lubricating oil) and apply silicone oil (lubricating oil) at the junction of the straight pipe and the bend pipe.

8.

馬桶類型

Toilet bowl type



請進入步驟9

Proceed to step 9.



請依照馬桶附帶的施工說明書進行安裝。

Install according to the Installation Guide enclosed with the toilet bowl.

9.

以下配件用於安裝馬桶。請參考馬桶安裝說明。

The parts are used for installing toilet bowl. Please see the installation manual of toilet bowl.



螺母(2)
Nut (2)



墊片(2)
Washer (2)



固定橡膠墊(2)
Stud Bolt Flange (2)



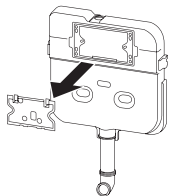
裝飾蓋(2)
Cap (2)

維修保養

Servicing procedures

排水閥的更換 Replacing the Flush Valve

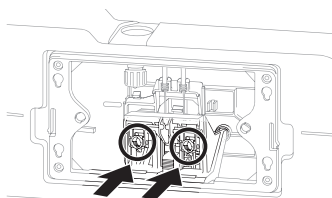
1.



拆下並拉出檔板。

Remove the splash guard and pull it out.

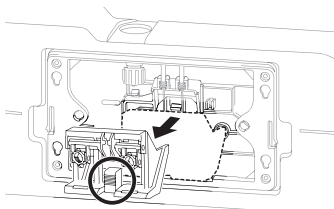
2.



關閉水箱中的三角凡而，然後按下調節支架上的按鈕進行沖水。

Close the angle valve in the tank, and then push the button on the actuator to flush the water.

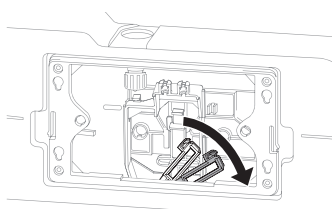
3.



壓住拉柄拆下調節支架。

Push on the tab to remove the actuator.

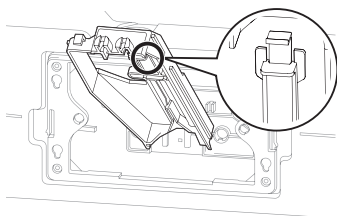
4.



將排水閥的兩根拉桿傾斜至右側。

Tilt the two pull-up rods of the flush valve to the right.

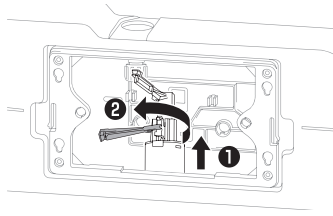
5.



拉緊拉柄(如圖中所示),拆下固定支架。

Remove the hold-down bracket by pulling on the tab indicated.

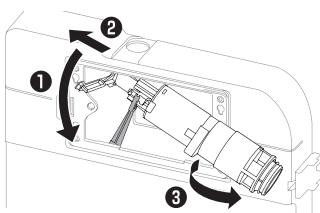
6.



拉起排水閥，旋轉拉桿。

Pull the flush valve up, and rotate the rods.

7.



拉出時旋轉整個排水閥。

Rotate the whole unit as you pull it out.

8.

排水閥底端的橡膠圈可以拆下進行清潔或更換。

At the other end of the flush valve, the rubber piece can be removed for cleaning or to be replaced.

9.

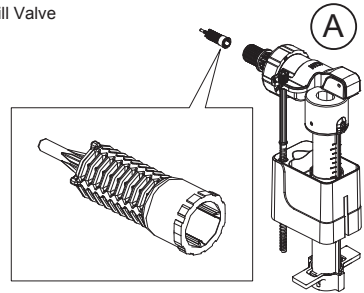
依照與上述相反的步驟操作，便能將零件安裝回水箱。

To install the parts back into the tank, do the reverse order.

清潔進水器濾嘴 Cleaning the Filter of the Fill Valve

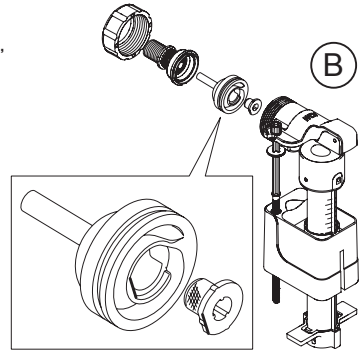
1. 按上述操作，關閉水箱三角凡而，然後拆下進水器。
2. 如圖A所示，拆開進水器，然後用水清洗過濾網，或者用刷子清除髒汙。
3. 按照與上述相反的步驟操作，便能將進水器安裝回原來的位置。

1. Close the water angle valve, and then remove the fill valve as described above.
2. As shown in pic A, disassemble the fill valve and clean the filter screen in FIG. A with water or clean the dirt with a brush.
3. To install, follow the procedure in reverse to return the fill valve to its original position.



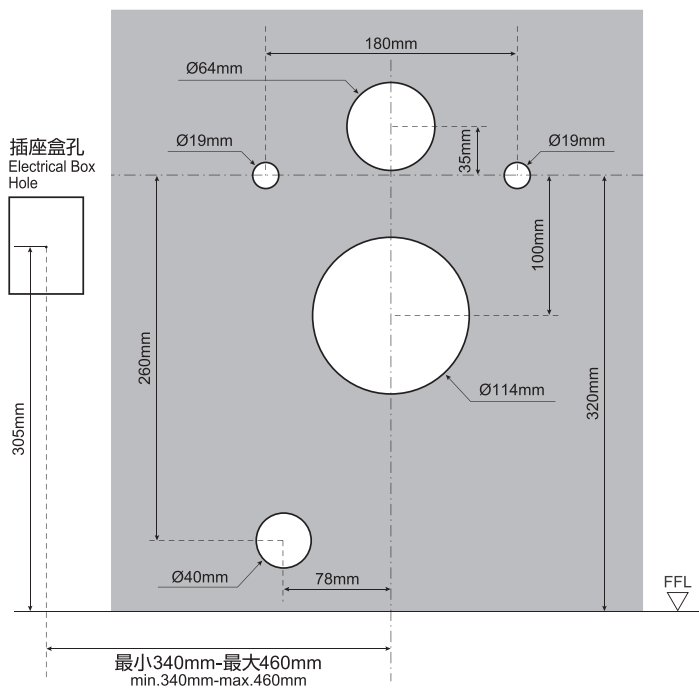
1. 按上述操作，關閉水箱三角凡而，然後拆下進水器。
2. 如果按圖A方式清洗後還有異常，再如圖B所示，拆開進水器，然後用水清洗圖B過濾網，或者用刷子清除髒汙。
3. 按照與上述相反的步驟操作，便能將進水器安裝回原來的位置。

1. Close the water angle valve, and then remove the fill valve as described above.
2. If there is any abnormality after cleaning as shown in pic A, disassemble the fill valve as shown in pic B, then clean the filter screen in pic B with water, or clean the dirt with a brush.
3. To install, follow the procedure in reverse to return the fill valve to its original position.



牆壁施工板詳細尺寸

Detail dimensions for wall Panel.



牆壁施工板詳細尺寸

Detail dimensions for wall Panel.

